

# IECS

— EST. 1984 —

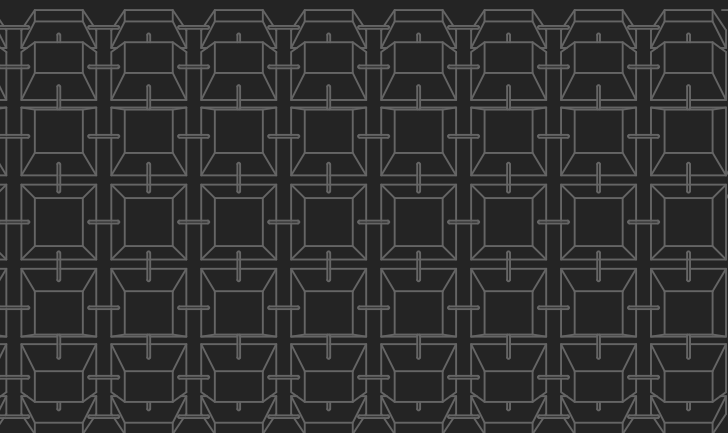
MANUFACTURING



# CABLE CONCRETE

## CC10

2477 [8'-1 1/2"]



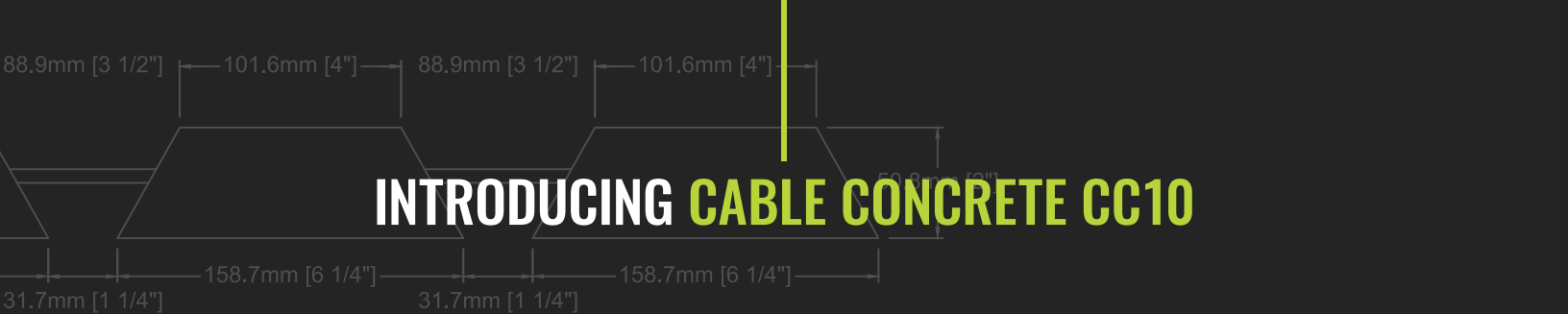
ROLL WIDTH  
700-900mm

Engineered as an alternative to loose rock rip rap, Cable Concrete CC10 is an articulated concrete block revetment system / Rolled Erosion Control Product developed by IECS Group Inc. The system has an extensive range of civil applications and is most commonly used for preventative erosion control measures caused by water, wind, and/or traffic. CC10 can be provided with a variation of underlay backing materials to best suit project requirements.

**1.800.821.7462**

**IECS.COM**

FRONT VIEW  
8' x 20' MAT ROLLED



# INTRODUCING CABLE CONCRETE CC10

## APPLICATIONS

Unlike other products, Cable Concrete CC10 can provide a wide range of solutions to a variety of applications such as:

- **RIVERBANK PROTECTION**
- **CULVERT INLET/OUTLET PROTECTION**
- **SPILLWAYS**
- **CHANNEL LINING**
- **POND LINING**
- **LAGOON PROTECTION**
- **OVERFLOW/WEIRS**



## SPECIFICATIONS

The mats or rolls consist of concrete blocks interlocked by revetment cables or ligature systems, which are poured through each block in both directions. The standard mattress or roll sizes are 2.44m x 6.1m Long (8'x20') roll lengths can be customized. They are designed to be placed side by side or end to end to provide an unvarying protective system.

Various types of underlayment materials can be utilized and provided with the CC10 product which include but not limited too; non-woven geotextiles, Straw/Coconut type Erosion control blankets (ECB), and or a combination of the above paired with a turf reinforcement mat (TRM).

SYSTEM	MINIMUM BLOCK WEIGHT		MINIMUM BLOCK HEIGHT	
	KG/SM2	LBS./SF2	MM	INCHES
CC10	48.82-63.47	10-13	48-52	1.8-2.1

TEST	TESTED VALUE	BED SLOPE	SOIL CLASSIFICATION	LIMITING VALUE
ASTM 6460	SHEAR STRESS	20%	LOAMY SOIL	24+PSF
ASTM 6460	VELOCITY	20%	LOAMY SOIL	30+FT/S

## ASTM STANDARD TESTING

CC10 Cable Concrete was tested to ASTM D 6460, "Standard Test Method for Determination of Rolled Erosion Control Products (RECP) Performance in Protecting Earthen Channels from Stormwater-Induced Erosion" by a certified third party and has generated results of a limiting Shear of 24+lb/ft2 and Limiting Velocities of 30+ft/sec.



MAT TO STRAP MIDDLE